

# BRIDGETTE MAYER GALLERY

Immediate Release

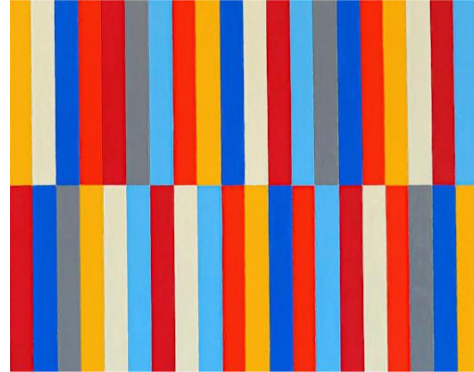
May 2025

Bridgette Mayer Gallery

t: 215-413-8893

e: [bmayer@bmayerart.com](mailto:bmayer@bmayerart.com)

[www.bridgettemayergallery.com](http://www.bridgettemayergallery.com)



**Bridgette Mayer Gallery Presents:**

**Chapel of Color, a solo exhibition by Jon Poblador**

**June 3 – August 2, 2025**

**Artist Reception & Happy Hour: Friday, June 27th, 5:00 – 7:30pm**

Philadelphia, PA – May 1, 2025 Bridgette Mayer Gallery is delighted to announce *Chapel of Color*, an exhibition by gallery artist Jon Poblador. This exhibition is comprised of 20 paintings and drawings that celebrate the transformative qualities of repetition, building surface, and structure as pathways to stillness. Through a meticulous process of building thin layers of paint in rectangular forms, Poblador creates slow and deliberate work with subtle shifts and irregularities in each composition. While not always visible at first glance, these complexities emerge through extended looking. *Chapel of Color* will be on view from Tuesday, June 3 to Saturday, August 2 at Bridgette Mayer Gallery. On Friday, June 27<sup>th</sup>, Bridgette Mayer Gallery will host an artist reception & happy hour from 5:00 to 7:30 pm with an artist talk occurring at 6:00 pm.

As an artist that utilizes process to draw parallels to the practices of meditation and the concept of mindfulness, Poblador thinks of painting not as a means of producing images, but as a kind of ritual. Grids function as a tool to highlight the balance between order and imperfection. On the meaning of the work, Poblador states:

*"I don't expect these works to offer answers or tell stories. Instead, I hope they create a space for quiet observation and introspection. Chapel of Color is meant to slow things down—to invite a different pace of engagement, where the viewer can spend time with each piece and begin to notice what is usually overlooked. Through repetition and attention, I believe something essential can emerge—not in explanation, but in experience."*

## **About Jon Poblador:**

Jon Poblador is a Filipino American contemporary artist and art educator who has been thoughtfully creating art for over two decades. Holding an MFA in painting from the University of Pennsylvania, his

# BRIDGETTE **MAYER** GALLERY

work has been exhibited in cities such as Philadelphia, New York, Phoenix, Guangzhou, and Hong Kong, where he currently lives with his wife, Susan, and their delightfully quirky dog, Otis.

**Exhibition information:** *Chapel of Color* will be on view from Tuesday, June 3 to Saturday, August 2, 2025 at Bridgette Mayer Gallery. On Friday, June 27<sup>th</sup>, Bridgette Mayer Gallery will host an Artist Reception & Happy Hour from 5:00 to 7:30 pm.

**Gallery information:** Bridgette Mayer Gallery is free and open to the public. We are located at 709 Walnut Street, 1st Floor, Philadelphia, PA 19106. Gallery hours are Tuesday – Saturday, 10:00am – 5:00pm.

For more information, please contact Emma McHold-Buke at: [eburke@bmayerart.com](mailto:eburke@bmayerart.com).

###