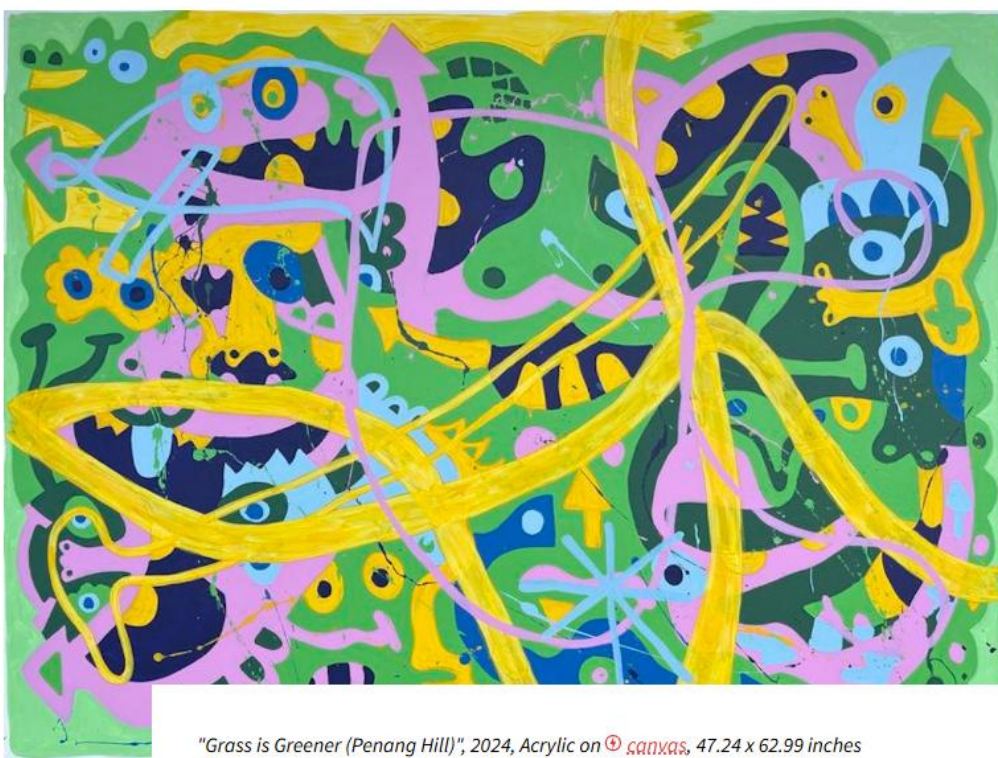



BRIDGETTE MAYER GALLERY

dM
dosageMAGAZINE™

HOME / LOOK / NIGEL SENSE AT BRIDGETTE MAYER GALLERY



"Grass is Greener (Penang Hill)", 2024, Acrylic on  canvas, 47.24 x 62.99 inches

LOOK

NIGEL SENSE AT BRIDGETTE MAYER GALLERY

709 Walnut Street 1st Floor Philadelphia PA 19106 tel 215 413 8893 fax 215 413 2283
email bmayer@bridgettemayergallery.com www.bridgettemayergallery.com

BRIDGETTE MAYER GALLERY

NIGEL SENSE AT BRIDGETTE MAYER GALLERY

Indulge “Asam Boi”: color-charged canvases where travel meets raw emotion as Nigel Sense makes his U.S. debut at Bridgette Meyer Gallery.

Share this:



By [Allan Lane](#) / April 17, 2025



This could be a banner ad for your business. Ask us how.



Nigel Sense: A Nomad's Palette Finds Philadelphia

Stepping into [Bridgette Mayer Gallery](#) this spring is like uncorking a bottle of Malaysia's tart-sweet drink for which Nigel Sense names his first Philadelphia solo exhibition, “Asam Boi”. Eighteen new canvases line the white-brick walls, each a fizz of citrus-bright color and swaggering brushwork that pays homage to the artist's recent residency in Penang.



“Beers Always Cost More On The Beach” 2024, acrylic on canvas, 21.65 x 21.65 inches (left)



“Ice Milk Tea Time” 2024, acrylic on canvas, 21.65 x 21.65 inches (right)

709 Walnut Street 1st Floor Philadelphia PA 19106 tel 215 413 8893 fax 215 413 2283
email bmayer@bridgettemayergallery.com www.bridgettemayergallery.com

BRIDGETTE **MAYER** GALLERY

Raised on the punchy aesthetics of 1960s Pop and the gestural bravado of Abstract Expressionism, Nigel Sense gathers fragments of travel—street-market signage, overheard slang, a glimpse of neon across humid dusk—and lets them collide in paint. Drips run, lines misbehave, and typeface snippets fight for space, but the eye never feels crowded; instead, there is a lyrical rhythm to the chaos, a reminder that discovery is made in motion. Sense calls his roaming research trips “going fishing,” and you can trace every cast on the canvas: a hot-pink swipe echoes temple lanterns, while a chalky turquoise block seems to bottle the monsoon sky just before the downpour.



"Most Uncomfortable Coffee Shop Chair Ever" " 2024, acrylic on canvas, 62.99 x 47.24 inches

BRIDGETTE MAYER GALLERY

Nigel Sense: Imperfection as Anthem

Sense's brush is unfiltered, almost rebellious, yet never careless; each impulsive mark converses with a ghost layer beneath, creating depth that invites slow looking. The exhibition's metaphor—a drink that's equal parts salty, sour, and sweet—feels apt: these paintings taste of jet lag, street-food euphoria, and the heart-tug of home left temporarily behind.

Paired in the **gallery's Vault** with Philadelphia-based artist, Mark Stockton's G.L.R. (George/Lincoln/Rockwell) exhibition, the show frames human complexity from two angles: Stockton's meticulous realism and Sense's exuberant immediacy. Together they form a compelling dialogue on truth and performance.



"Sunset With iPhone" 2024, acrylic on canvas, 47.24 x 55.12 inches (left)



"Casio Keyboard Warrior" 2024, acrylic on canvas, 47.24 x 55.12 inches (right)

BRIDGETTE **MAYER** GALLERY

For collectors seeking work that crackles with energy yet sustains repeated viewing, Nigel Sense offers a persuasive argument that perfection is overrated—and honest delight is timeless.

About Post Author



Allan Lane

Philadelphia born and bred, Allan Lane is the Publisher and Editor in Chief of digital magazines. He launched his first publication, SportBikes Inc Magazine in 2010, followed by dosage MAGAZINE in 2019. Recently, Allan launched his third online publication, Club For Man. As a journalist, Allan covers fashion, lifestyle, culture, art, and motorcycles.

[See author's posts](#)



<https://www.dosagemagazine.com/nigel-sense-makes-at-bridgette-mayer-gallery/>